



Fax Solutions – Walk-up, desktop or Internet. No matter the fax method we got you covered.



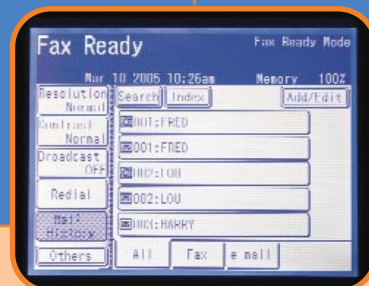
Walk-up faxing. It may sound retro, but high-speed fax communication never goes out of style. The virus-free communication line sits off the network, so whether the server is down for “routine-maintenance” or a hacker figured out the passcode is “1-2-3-4”, you always have a dependable method of document distribution at your disposal.



Desktop faxing. You’re not being lazy, you’re simply leveraging technology. Transmit documents directly from popular desktop applications to remote fax terminals, thus eliminating the need to print documents for manual transmission. You can even search the internal address book or perform an LDAP directory search from the intuitive browser interface.



Internet faxing. Just because this is an Internet-based faxing solution doesn’t mean you need a PhD to operate it. Simply enter an e-mail address (using the intuitive QWERTY keypad) and press [Start]. Complicated stuff. This T.37-compliant system utilizes your existing e-mail server and offers fast, secure transmissions to remote Internet fax terminals and e-mail inboxes.



Address Book. With the F-series you can access your little black book! The internal address book can store up to 300 contacts, each containing a fax number, e-mail address and group dial entry. The OfficeBridge Expansion Kit increases the capacity to 2000 contacts* and allows you to manage both personal and shared address books, keeping your contacts behind a password protected log-in.

*Requires OfficeBridge Expansion Kit and 512-MB compact flash

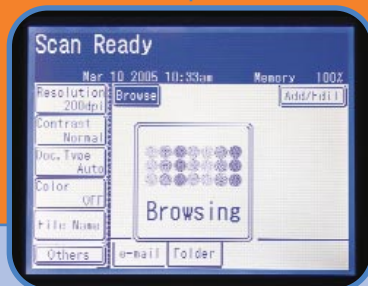
Additional Features & Benefits:

- ❖ Full LDAP directory support allows you to search corporate directory servers for contact information. Once a contact is located they can be registered into the internal address book for future one-touch job initiation.
- ❖ Optional 33.6 Kbps fax modem can be added to alleviate machine congestion in high-volume environments
- ❖ Transmission Confirmation Reports (TCR) provide a success/failure statement to alert you of a transmission’s status

- ❖ Broadcast the same document to up to 330 fax or e-mail destinations (including up to 30 direct dial locations)
- ❖ Each outgoing transmission can be tagged with a personalized cover page, enabling customized processing instructions, urgency alerts or additional text messages
- ❖ Power outage, no problem. Documents stored in the machines memory will be held for up to 72-hours, ensuring that business-critical documents are not lost



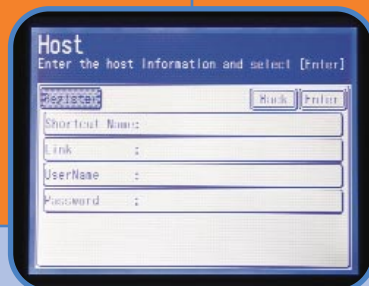
Scan Solutions – This isn’t your run-of-the-mill fax machine, this is a complete digital document distribution center.



Scan to folder. Here’s where the real fun begins. Navigate your network file structure from the touchscreen and direct documents into a specified folder with ease. The high-resolution color scanner will provide crystal-clear images that can be retrieved by a multitude of document management systems for archiving or records management purposes.



Scan to e-mail. Customizing a scan to e-mail transmission has never been easier. Using the intuitive QWERTY keypad you can slap on a custom file name, subject line and even a brief text message, preventing your recipients from mistaking your document for a computer virus or unwanted SPAM.



Scan to FTP. Files that are too large to be sent via a traditional e-mail server can be scanned to a password protected FTP site for either storage or sharing. Up to 20 FTP shortcut keys can be created for seamless one-touch scan initiation.

Additional Features & Benefits:

- ❖ Supports fax & e-mail mixed transmissions, allowing recipients to receive documents in their preferred method
- ❖ Documents may be scanned in TIFF, PDF or JPEG** file format
- ❖ Any document stored on the network can be attached to an outgoing e-mail transmission, allowing for the inclusion of privacy policies or legal disclaimers

- ❖ Direct network scanning does not require the addition of any hardware connectors or software utilities, unlike some of the “big boys” machines (we won’t name names)
- ❖ Color scanning via the USB port offers TWAIN-complaint imaging to a local PC

** JPEG file format is for color scanning only



Management Solutions – These devices are so eager to get to work that they will install themselves on the network! DHCP compliance will have them sniffing out network settings from the moment the power is turned on. Once active on the network, the devices can be located using the intuitive OfficeBridge browser interface at which time you can adjust machine settings, set-up customized workflows and import contacts from Microsoft Outlook (vCard) or through other contact management databases (CSV). Permission-based browsing ensures both system integrity and personalized navigation.



Printing Solutions – What do you do with one of the most decorated*** print engines in your product history? Go back to the drawing board and refine it. The F-series engine has been redesigned to increase document clarity, reliability and overall performance. The adjusted paper-path provides a seamless route from cassette to output tray, thus reducing paper curl and jamming issues. The new LED-head provides high-resolution document output and seamless 14 and 20 page-per-minute performance. Standard GDI-based network printing allows up to 50 users access to a convenient print solution while the F-520D and F-560 include standard duplexing to reduce both document storage and operational expenses.



General Efficiency Solutions – From the segment-leading 80-sheet automatic document feeder to the flexible paper capacity, the F-series are powerful workgroup solutions. The 50-sheet bypass tray is perfect for printing on labels, envelopes and other (dare we say quirky) materials. The high-yield consumables are user-changeable and take only moments to replace, while offering an ultra-low cost of operation.

***Based on F-320 and MFX-1700 engine.
Editor’s Choice – Better Buys for Business 2002 (F-320)
Highly Recommended – Buyer’s Laboratory 2002 (F-320)
Small Office / Home Office MFP of the Year – BERTL 2004 (MFX-1700)