

- | | |
|-------------------------|---|
| Marketing Centre Office | ← |
| Conference Room | ← |
| One Touch Toner Save | → |
| Favorite Copy | → |
| ID Card Copy | → |
| Easy Paper Access | → |
| OCR | → |
| PC Fax | → |
| Digital Copier | → |
| Laser Printer | → |
| Color Scanner | → |



imagine all the attention that makes your office exclusive



Choose one feature or choose them all. They were created exclusively for you. Enjoy the convenient and powerful features on your own desk. With Samsung mono laser MFP it's not that hard to imagine.

Samsung Mono Laser MFP SCX-4725F/4725FN





imagine all the attention that makes your office exclusive.

Life's full of choices, but you're in charge. You can multi-task with the best of them and still meet your deadlines. Now, let Samsung handle the details. With Samsung mono laser MFP, it's not that hard to imagine.

Components



- 1. ADF (Automatic Document Feeder) 2. Document width Guides 3. Document Input Tray
- 4. Scanner Lid 5. Document Output Tray 6. Control Panel 7. Output Tray 8. Front Cover 9. Tray
- 10. Power Switch 11. Power Receptacle 12. Rear Ccover 13. Network Port(SCX-4725FN only)
- 14. USB Port

Control Panel Components

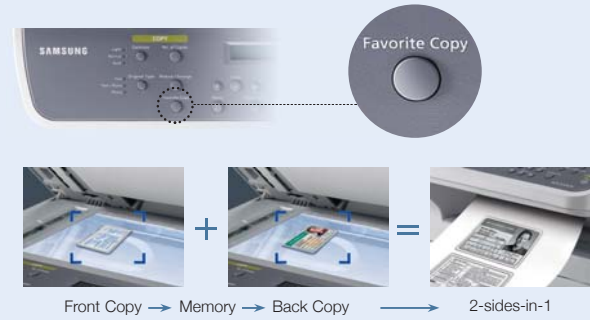


- 1. Darkness 2. No. of Copies 3. Original Type 4. Reduce/Enlarge 5. Favorite Copy 6. Display
- 7. Scroll buttons 8. Enter 9. Menu 10. Upper Level 11. Start 12. Stop/Clear 13. Number keypad
- 14. Resolution 15. Broadcasting 16. Phone Book 17. Redial/Pause 18. On Hook Dial 19. Scan To
- 20. Toner Save

imagine all the attention towards the short time

Favorite Copy

Store a few functions as "Favorite Copy." Instead of requiring multiple steps to select copy options, pressing the "Favorite Copy" button requires only one step to complete the assigned special copy. As fast as it gets.



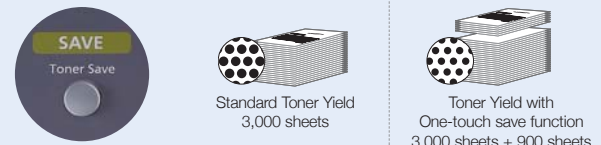
ID Copy

This exclusive ID copying function allows you to consolidate copies without hassle or wasting time or paper.

imagine all the attention towards the low cost

Toner Save Function

Toner Save Mode reduces toner consumption by up to 30%, giving you more print outs per toner cartridge. This mode not only remains the print quality, but also saves papers for draft copies.

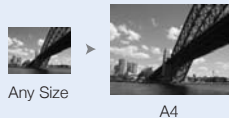


imagine all the attention towards the small space

Print & Copy Incredible Speed up to 24 pages per min (A4) printing and copying.

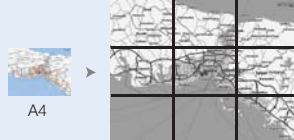
Auto-fit Copying

A small image expanded to fit the printed page



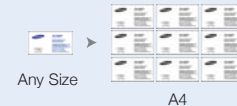
Poster Printing

One image can be enlarged up to 300% and printed in up to 9 perfectly aligned A4 pages



Clone Copying

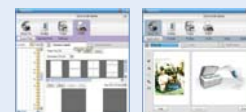
The same image in reduced size on one printed page



Scan Up to 4,800 dpi (via USB interface) lets you create digital copies of important papers and visual images.

SmarThru™ 4

SmarThru™ 4 document handling software will let you edit scanned images, save them in various formats, and set up copy/print formats - one click at a time.



OCR (Optical Character Recognition)

OCR software scans books and transforms them into editable rich text files.



Fax

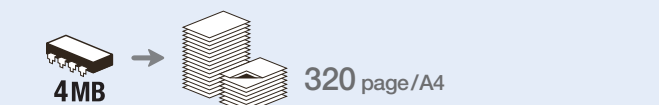
PC Fax

SCX-4725F/4725FN send a Fax document directly from your PC through SmarThru™4 software. You can just sit and watch everything being done. (send only)



4 MB Fax Memory

4 MB Fax Memory equivalent to approximately 320 pages at ITU-T #1 Chart .



10 One-touch Dial and 90 Speed Dial Functions

You can store up to 100 frequently dialed numbers in one or two digit speed dial location (0~99).

33.6 Kbps Modem Speed

Specifications

SCX-4725F

SCX-4725FN

	SCX-4725F	SCX-4725FN
Print		
Speed *		Up to 24 ppm
Resolution		Up to 1200 dpi Effective Output (Addressable 1200 x 1200 dpi)
First Print Out Time		10 seconds (from Standby mode)
Emulation	PCL6	PCL6, Post Script 3
Duplex Print		N/A
Copy		
Speed **		Up to 24 ppm
Resolution (Optical)	Text : 600 x 600 dpi	Text / Photo : 600 x 300 dpi Photo mode : 600 x 600 dpi (Platen), 600 x 300 dpi (ADF)
First Copy Out Time		10 seconds (from Standby mode)
Zoom Rate		25~400% (platen), 25~100% (ADF)
Multi Copy		1~99 pages
Scan		
Compatibility		Twain Standard, WIA Standard
Method		Colour CIS
Resolution (Optical)		600 x 600 dpi
Resolution (Enhanced)		4800 x 4800 dpi
Effective Scan Length		Platen : Max. 297 mm (11.7"), ADF : Max. 356 mm (14.0")
Effective Scan Width		Max. 208 mm (8.2")
Color Bit depth		Internal : 36 bit, External : 24 bit
B/W Bit depth		1 bit for Text mode, 8 bit for Gray mode
Gray Scale		256 Levels
Fax		
Compatibility		ITU-T Group 3, ECM
Applicable Line		Public Switched Telephone Network (PSTN) or behind PABX
Modem Speed		33.6 Kbps
Transmission Speed ***		Approx. 3 seconds per page
Compression Mode		MH / MR / MMR / JBIG / JPEG
Scan Speed ****		Approx. 3 seconds per page
Resolution		Max. 300 x 300 dpi
Memory		4 MB (Approx. 320 pages at ITU-T #1 Chart)
Auto Dial		1-Touch dial : 10 Locations Speed dial : 200 Locations (including 1-Touch dial)
Paper Handling		
Input Capacity and Types		250-sheet Main Tray (75 g/m ² , 20 lbs), 1-sheet Manual Tray
Output Capacity and Types		100-sheet Face Down (75 g/m ² , 20 lbs)
Media Size (for Print)		A4, A5, Letter, Legal, Executive, Folio, Oficio, ISO B5, JIS B5, A6, Envelope Monarch/Com-10/DL/C5/C6
Media type		76 x 127 mm (3" x 5") ~ 215.9 x 356 mm (8.5" x 14")
ADF Capacity		Plain Paper, Transparency, Envelope, Labels, Card stock, Thick, Thin, Cotton, Color, Pre-Printed, Recycled, Bond, Archive
ADF Document Size		30 sheets (Letter / A4, 20 lb / 75 g/m ²) Width: 142 ~ 216 mm (5.6"~8.5") Length : 148 ~ 356 mm (5.8" ~ 14.0")
General		
Net Dimension (W x D x H)		438 x 374 x 387 mm (17.2" x 14.7" x 15.2")
Weight with Consumables		11.2 Kg
LCD		2 line x 16 characters
System Memory		32 MB
Interface	Hi-Speed USB 2.0	Hi-Speed USB 2.0, Ethernet 10/100 Base TX
OS Compatibility *****	Windows 98/Me/2000/XP(32/64bit)/2003 Server(32/64bit)	Various Linux OS including Red Hat 8~9, Fedora Core 1~4, Mandrake 9.2~10.1, and SuSE 8.2~9.2 Mac 10.3, 10.4 (SCX-4725FN only)
Warm-up Time		Less than 20 seconds (from Sleep mode)
Noise Level *****		Warm up : Less than 49 dBA Stand by : Less than 35 dBA Printing : Less than 53 dBA Copier : Less than 55 dBA
Power Requirement		110 ~ 127 VAC, 50/60 Hz, 5.5A 220 ~ 240 VAC, 50/60 Hz, 3.0A
Power Consumption		Sleep Mode : Less than 13.5 W Standby Mode : 70 W Average : 400 W (Printing) / 320 W (Copying)
Operating Conditions		Temperature : 10 °C ~ 32 °C (50 °F ~ 89 °F) Humidity : 20 % ~ 80 % RH
Duty Cycle, monthly		Up to 10,000 pages
Consumables		
Type		Single Cartridge
Yield		Average cartridge yield 3,000 standard pages. Declared yield value in accordance with ISO/IEC 19752. (Ships with 1,500 pages Starter Toner Cartridge)
Code		SCX-D4725A

* Print speed will be affected by Operating System used, computing performance, application software, connecting method, media type, media size and job complexity.

** Copy Speed is based on Single Document Multiple Copy.

*** Condition: Standard resolution, MMR (JBIG), Maximum modem speed, Phase "C" by ITU-T No.1 Chart, Memory Tx, ECM

**** Condition: ITU-T No.1 Chart, Standard Resolution

***** Please visit www.samsungprinter.com to download the latest software version.

Samsung SmartThru™4 Document management is provided for free of charge.

***** Sound Pressure Level, ISO7779

Distributed by

Design and Specifications are subject to change without notice.
Trademarks of other companies mentioned in these publications are hereby recognised and acknowledged.